

**New Dairy farm bulk tank  
recording thermometer  
increases your quality premiums by 20%**

## The GUARDIAN

 **Higher Quality Milk = Higher Quality Premiums!**

 **Lower Bacteria Counts Through Complete Bulk Tank System Monitoring!**

 **Eliminate Lost Loads of Milk Due To Over-Temperature Conditions!**

The Guardian is the only circular chart recording thermometer specifically designed for the dairy farmer that will monitor and document milk temperature. This ensures that your milk is properly cooled and remains cool while stored in the bulk tank. The result is higher quality milk and increased premiums for you!



*The Guardian Comes fully equipped with a sensor - No additional equipment needed*



*Records both wash water temperature and wash time — Eliminates another potential source of bacteria!*

### Further Benefits of the Guardian:



Digital temperature display providing you with early detection of potential problems



High temperature alarm alerts you to cooling problems, preventing lost loads of milk

[www.anderson-fbtr.com](http://www.anderson-fbtr.com)  
[sales@anderson-fbtr.com](mailto:sales@anderson-fbtr.com)



Anderson Instrument Company, Inc.  
2100 W. Broad Street  
Elizabethton, NC 28337  
Ph: 1-800-286-4890  
Fax: 1-910-862-5404

## HOW TO ORDER:

### Step 1

- ☐ Recorder with standard high temperature alarm relay - RTD sensor with 25' cable  
Part Number **55010001**
- ☐ Recorder with standard high temperature alarm relay - RTD sensor with 50' cable  
Part Number **5501000101**
- ☐ Recorder with second alarm relay for high **and** low temperature indication - RTD sensor with 25' cable  
Part Number **55020001**
- ☐ Recorder with second alarm relay for high **and** low temperature indication- RTD sensor with 50' cable  
Part Number **5502000101**

### Step 2

#### CHART ROTATION TIME PERIOD

- ☐ 24 Hours We recommend a chart rotation time that corresponds to your milk pick-up schedule. For example, if your milk is picked up every other day, choose a chart rotation time of 48 hours.
- ☐ 48 Hours
- ☐ 72 Hours
- ☐ 7 Days

\* Note: For recording in degrees C, please tell your dealer when ordering.

## SPECIFICATIONS:

#### INPUTS

Input Types/Range

Type  
RTD 100 ohm Platinum  
.00385 ohms/ohm/°C  
Sensor Fault Detection

Range  
-1°C to 82°C 30°F to 180°F

Display goes to 'SnSr' and pen goes downscale if a sensor break is detected.  
Display goes to 'Hi' 10% above span.  
Display goes 'Lo' 10% below span

#### ALARMS

Number  
Type  
Security

Up to two process alarms  
Process high or low  
Alarm setpoint changes can be prohibited

#### RELAY OUTPUTS

Relays

SPDT, contacts rated 5 amps resistive at 115 VAC,  
2.5 amps resistive at 230 VAC, 1/8 HP at  
230 VAC (single phase), 250 VA at 115/230

#### RECORDING

Pen Color  
Chart Size  
Chart Rotation  
Chart Span  
Chart Platen  
Accuracy

Red  
10 inch (Highlighted Green Zoned Chart)  
User configurable: 24 hours, 48 hours, 72 hours, or 7 days  
Bottom and top of span, 30° to 180°F (Reverse Range)  
Sealable/Pinned Hub  
± .75°F or 0.5% of chart span reference accuracy

#### OPERATOR INTERFACE

Display  
Status Indicators  
Keypad

Four digits 0.56" high, red, seven segment, LED display  
Two red LED alarm status indicators  
Three keys for programming and unit operation

#### POWER REQUIREMENTS

Line Voltage

90-264 VAC, 50/60 Hz

#### CONSTRUCTION

Enclosure  
NEMA Rating  
Conduit Openings  
Mounting  
Overall dimensions

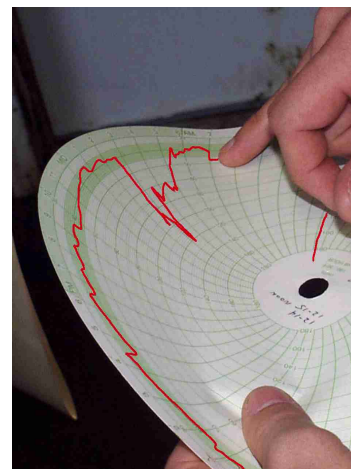
Injection molded case and cover with acrylic window  
NEMA 4X standard  
Three openings on the bottom  
Wall  
11.5" wide X 14" high X 6.6" deep.  
Weight 15lbs maximum

#### ENVIRONMENTAL AND OPERATING CONDITIONS

Operating Temperature 0°C to 50°C (32°F to 122°F)

#### GENERAL REFERENCE INFORMATION

One Year Warranty  
UL and cUL Approved  
Holds Calibration for minimum of One Year  
Recorder and sensor calibrated and supplied as a package  
Short circuit protected



*This Dairy Farmer located a potential source of bacteria using the information displayed on the chart!*



Anderson Instrument Company, Inc.  
2100 W. Broad Street  
Elizabethton, NC 28337  
Ph: 800-286-4890  
Fax: 910-862-5404  
www.anderson-fbtr.com  
sales@anderson-fbtr.com